

AN ISO 9001:2015 CERTIFIED COMPANY



## PLASTIC & FRP MANHOLE COVER & FAUCET COLLECTION

MANHOLE COVER | PTMT FAUCETS | CISTERN | SEAT COVER & ACCESSORIES





## About us

ULTRA POLYPLAST is one of the leading manufacturer of Plastic Manhole cover. ULTRA POLYPLAST Is An ISO 9001:2015 CERTIFIED COMPANY. ULTRA POLYPLAST is committed to provide Excellence quality and service to all clients globally.

We have wide range of manhole cover in each and every size so customer can choose as per application. Company has equipped with heavy automatic machinery to provide maximum accuracy and similar quality.

## Our vision



On time delivery



Consistent quality



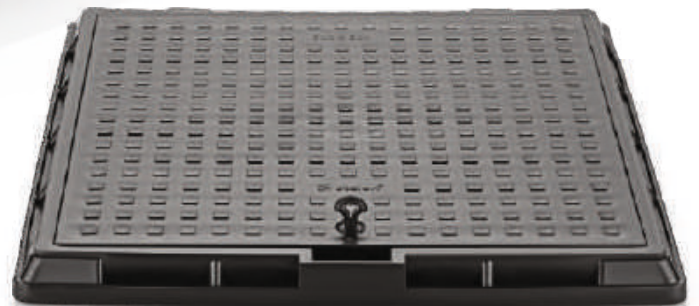
Customer care service



High quality products at competitive prices



CLICK HERE!



## Plastic Manhole Cover

Long Life and Durable...

### PLASTIC MANHOLE COVER REGULAR

Sr.	SIZE in INCH	SIZE in mm
1	10" X 10"	250 X 250
2	12" X 12"	300 X 300
3	12" X 18"	300 X 450
4	15" X 15"	380 X 380
5	18" X 18"	450 X 450
6	18" X 24"	450 X 600
7	21" X 21"	535 X 535
8	24" X 24"	600 X 600
9	27" X 27"	686 X 686

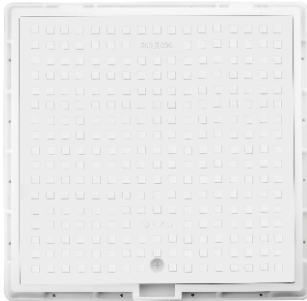
### PLASTIC MANHOLE COVER EXTRA HEAVY

Sr.	SIZE in INCH	SIZE in mm
1	18" X 18"	450 X 450
2	18" X 24"	450 X 600
3	21" X 21"	535 X 535
4	24" X 24"	600 X 600
5	27" X 27"	686 X 686

## ENGINEERING POLYMER

Our R&D Department is always ready to introduce new products with enhanced features and cost effective solution. After continuous R&D we were successful in developing a cost effective engineering polymer manhole cover with higher load capacity and tensile strength. The product is fabricated from high Grade polymer and some additives to optimize maximum durability and excellent lifespan.

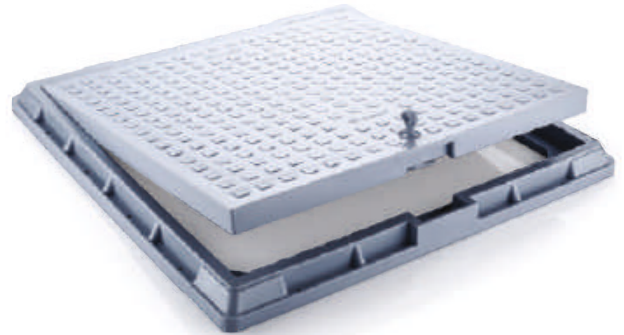
This product is suitable for use in Luxury Row house, villas, Resort, highrise building, under ground parking.



GRAY



MARBLE



IVORY

### ENGINEERING POLYMER MANHOLE COVER

Sr.	SIZE in INCH	SIZE in mm
1	12" X 12"	300 X 300
2	18" X 18"	450 X 450
3	18" X 24"	450 X 600
4	24" X 24"	600 X 600
5	27" X 27"	686 X 686
6	21" X 21"	535 X 535



Testing certificate of MSME, Government of India, Mumbai.

### WHY USE "STELON" PLASTIC MANHOLE

Description	Stelon	Cart Iron	MS/GI	RCC
Life Cycle	High	Moderate	Low	Moderate
Corrosion Resistance	High	Moderate	Very Low	Moderate
Cost	Low	High	High	Moderate
Finish	Fine	Rough	Modrate	Rough
Handling	Easy	Hard	Hard	Very Hard
Scrap Value	Low	High	High	Low



WEATHERPROOF



HIGH LIFESPAN



EASY HANDLING



SAFE & ANTI SLIPPERY SURFACE

### FEATURES

- Weather Proof
- High Life Span
- Easy Handling
- Non Corrosive
- Abrasion Resistance
- Free From Theft
- Safe And Anti Slippery Surface

### APPLICATION

- Residential
- Inspection Chamber
- Commercial
- Garden / Landscaping
- Sewer Drainage System
- Best For Coastal Area
- Electrical Earthing
- Walk ways

- ANY COLOR OPTION AVAILABLE IN ENGINEERING POLYMER GRADES ON SPECIAL ORDER
- PLASTIC MANHOLE COVER ALSO AVAILABLE IN RP GRADES AS PER ORDER



# FRP MANHOLE COVER

## INTRODUCTION

We ULTRA POLYPLAST had strong market present in PLASTIC MANHOLE COVER segment so as per our customer demand we have developed FRP MANHOLE COVER for better quality assurance in all aspects. Our FRP manhole cover comes with Multi Layer technology which provide excellent durability and long life.

## WHY TO CHOSE OUR FRP MANHOLE COVER ????

- WE USE 100% PURE RESIN TO OPTIMUM STRENGTH AND LONG LIFE
- OUR MANHOLE COVER COMES WITH CONSISTENT QUALITY
- OUR PURE MATERIAL PREVENTS BENDING PROBLEMS
- ALL PRODUCTS WILL PASSED THROUGH QUALITY INSPECTION AND TESTING
- PRODUCT IS ALSO AVAILABLE IN 1 LAYER, 3 LAYER , 5 LAYER
- ANY COLOUR OPTION AVAILABLE WITH SPECIAL REQUEST ON ADDITIONAL CHARGES
- OUR FRP MANHOLE COVER IS CRACK RESISTANCE



## AVAILABLE SIZE

Sr.	SIZE in INCH	SIZE in mm
1	12" X 12"	300 X 300
2	15" X 15"	380 X 380
3	18" X 18"	450 X 450
4	12" X 18"	300 X 450
5	18" X 24"	450 X 600
6	21" X 21"	535 X 535
7	24" X 24"	600 X 600
8	28" X 28"	700 X 700
9	30" X 30"	750 X 750
10	36" X 36"	915 X 915







**STL - 601**  
Bib Cock with Flange



**STL - 602**  
Long Body Bib Cock with Flange



**STL - 603**  
Angle Cock with Flange



**STL - 604**  
Pillar Cock with Flange



**STL - 605**  
Sink Cock with Flange



**STL - 606**  
Swan Cock with Flange



**STL - 607**  
Two way Bib Cock with Flange



**STL - 608**  
Washing Machine Cock with  
Long Nozzel Bib Cock with Flange



## **SUPERB collection**

P.T.M.T. (Polytetra Methylene terephthalate)



**STL - 3001**  
Bib Cock with Flange



**STL - 3002**  
Long Body Bib Cock with Flange



**STL - 3003**  
Angle Cock with Flange



**STL - 3004**  
Pillar Cock with Flange



**STL - 3005**  
Sink Cock with Flange



**STL - 3006**  
Swan Cock with Flange



**STL - 3007**  
Two way Bib Cock with Flange



**STL - 3008**  
Washing Machine Cock



**STL - 3009**  
Long Nozzel Bib Cock With Flange





**STL - 2001**  
Bib Cock with Flange



**STL - 2002**  
Long Body Bib Cock with Flange



**STL - 2003**  
Angle Cock with Flange



**STL - 2004**  
Pillar Cock with Flange



**STL - 2005**  
Sink Cock with Flange



**STL - 2006**  
Swan Cock with Flange



**STL - 2007**  
Two way Bib Cock with Flange



**STL - 2008**  
Washing Machine Cock



**STL - 2008**  
Long Nozzel Bib Cock With Flange



## EDGE collection

P.T.M.T. (Polytetra  
Methylene terephthalate) 20mm TAPS  
S.S. INSERT INSIDE



**STL - 301**  
Bib Cock with Flange



**STL - 302**  
Long Body Bib Cock with Flange



**STL - 303**  
Angle Cock with Flange



**STL - 304**  
Pillar Cock



**STL - 305**  
Sink Cock with Flange



**STL - 306**  
Swan Cock with Flange



**STL - 307**  
Two way Bib Cock with Flange



## FLUSH Tank collection



SILVER FLUSH TANK  
WITH SIDE HANDLE

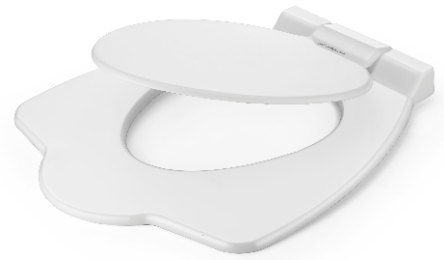


SUPER FLUSH TANK  
WITH TOP PUSH



ANTIQUE FLUSH TANK  
WITH FRONT PUSH

## Toilet seat Cover collection



ANGLO INDIAN  
SEAT COVER



EWC REGULAR  
SEAT COVER

## Health Faucet collection



WHITE

HEALTH FAUCET WITH 1 MTR  
TUBE AND HOOK



CHROME

HEALTH FAUCET WITH 1 MTR  
FLEXI TUBE AND HOOK

## PTMT CONNECTION PIPE WITH KEY



TESTED ON HIGH PRESSURE  
FOR HOT AND COLD WATER

AVAILABLE SIZE

12" 18" 24" 30" 36" 48"

## DRAIN JALI



### PRODUCT FEATURES:

- MADE WITH ENGINEERING POLYMER GRADE
- UNBREAKBLE
- LOAD BEARING CAPACITY 5 T
- COMES WITH ANTI COCKROACHES & ANTI INSECTS
- AVAILABLE IN 2 PIECES AND 4 PIECES
- EASY MAINTENANCE
- LONG LIFE AND DURABLE



# OUR NETWORK!



Mfg. By:

**ULTRA**  
POLY PLAST

Authorised Distributor

